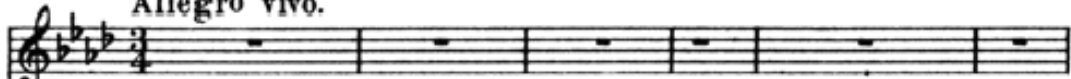


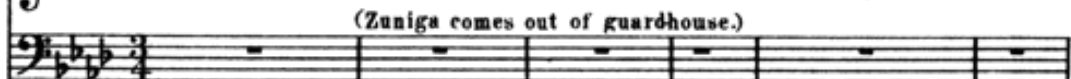
## Nº 11. Finale.

Allegro vivo.

Carmen.



Zuniga.



(Zuniga comes out of guardhouse.)

Piano

Allegro vivo. ( $\text{♩} = 69$ )

*pp*

Zuniga.

(to Don José.)

*mf*

Voi - ci l'or - dre; par -  
Here is the or - der; now

tez.  
go!Et fai - tes bon - ne gar -  
Take care...she does not cheat- de.  
you!

Carmen. (aside to Don José.)

*sotto voce.*

En che - min je te pous - se -  
On the way I'll give you a

rai, je te pousse - rai — Aussi fort que je le pour -  
 push, I'll give you a push — Just as hard as I ev - er

rai, Lais - se - toi ren - ver - ser...  
 can: You must fall - off I rush -

Le res - te me - re - gar - de.  
 You know where I shall meet you!

*Allegretto quasi Andantino.* (♩ = 72.)

**Carmen.** (singing, and laughing in Zuniga's face.)

L'a-mour est en-fant de Bo - hème, Il n'a ja - mais, jamais connu de  
 A Gyp - sy boy is Love, 'tis true, He ev - er was and ev - er will be

*sempre pp*

loi; Si tu ne m'aimes pas, je t'ai-me; Si je t'ai-me, prends garde à  
free; Love you not me, then I love you, — If I love you, be - ware of

The first system consists of a vocal line and a piano accompaniment. The vocal line has a treble clef and a key signature of two flats. The piano accompaniment has a grand staff with treble and bass clefs. The music is in 2/4 time and features a mix of eighth and sixteenth notes in the vocal line, with sustained chords in the piano accompaniment.

toi! — Si tu ne m'aimes pas, si tu ne m'aimes pas, je  
me. — Love you not me, — love you not me, then I love

The second system continues the vocal line and piano accompaniment. It includes a *rit.* (ritardando) marking at the beginning of the piano part. The vocal line features a long note on "me." followed by a series of eighth notes. The piano accompaniment consists of sustained chords.

t'ai-me! Mais si je t'ai-me, si je t'ai-me prends garde à —  
you! — But if I love you, if I love you, be - ware of —

The third system continues the vocal line and piano accompaniment. It includes a *cresc.* (crescendo) marking above the vocal line. The vocal line has a melodic line with some grace notes. The piano accompaniment features a more active bass line with eighth notes.

(she marches off with Don José and the Soldiers.)

toi!  
me!

The fourth system shows the vocal line ending with "toi!" and "me!". The piano accompaniment continues with a rhythmic pattern of eighth notes. It includes a *sempre pp* (sempre pianissimo) marking. The key signature changes to one flat.

The fifth system continues the piano accompaniment with a complex rhythmic pattern of eighth and sixteenth notes. The key signature changes to two flats.

## Allegro vivace. (♩=92.)

(On arriving at the bridge, Carmen pushes the soldiers down, and escapes, laughing loudly.)

ff

(General laugh.)

ff

(Curtain.)

tutta forza.

ff

ff

ff